

## FREQUENTLY ASKED QUESTIONS

We have compiled a selection of our most frequently asked questions.

If you would like more information about these topics or anything else, please visit our website or give us a call and a member of our team will be happy to help you.



### **Do I have a choice in the type of child I care for?**

As part of your assessment your agency will discuss with you what categories of fostering would best suit you and your family. They will work with you to identify your strengths and skills and help you work out where you are best suited, to ensure that the match between you and the child you care for is compatible.

### **How old do you need to be to foster?**

To begin a path into fostering, each individual enquiring will need to be over the age of 21 years old. Being retired isn't a barrier to applying to become a foster carer, there is no upper age limit.

Fostering is dependant on the individual circumstances, how fit and healthy the potential foster carers are.

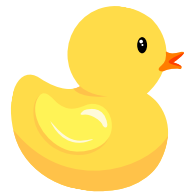
### **I'm LGBTQIA+, is this a barrier to becoming a foster carer?**

Being LGBTQIA+ is not a barrier to becoming a foster carer, it is very much encouraged, if the right individual can provide a safe warm home for a child.

### **Do you need to have special qualifications to be a foster carer?**

No additional or special qualifications needed to be a foster carer, having experience working with children or young adults can be beneficial but not essential.





### **Do I need to be in a stable relationship to become a foster carer?**

To foster a child, you do not need to be in a relationship, if you are making an application as couple, it is a recommendation to be together for longer than 18 months. If the couple are not living together, the partner will need to go through assessments and an enhanced DBS.

Being single is no barrier to fostering. Fostering a child requires a special type of person and such people can come from all walks of life.

### **How much will I earn as a foster carer?**

Foster carers will undergo talks about the weekly allowances for the foster child, and this will be influenced by the needs of the child and if there are siblings placed in the foster home. All agencies have different weekly summaries for the child in placements, but they usually base the finances on a weekly basis.

### **Can I be foster carer if in full time employment?**

If you are part of a couple, we ask that at least one of you is a stay-at-home carer or a flexible worker. This is to allow the primary carer to accommodate the needs of the child, including meetings, contacts and schools, plus additional meetings, such as those with social workers and for training.

If you are a single foster carer, it is asked that the employer is flexible to your fostering commitments. This may include working from home or working within the school hours.

### **What support is available to foster carers?**

Foster carers are invited to support groups within their agency, this can be groups for the foster parents only and separate groups for the foster parents and the children. These groups are highly recommended by foster parents, as they meet with carers in the same position as them and can obtain advice from each other.

A registered foster carer will have frequent discussions and meeting with their assigned social worker, this will allow them to go through any questions or concerns they may have in or out of placements.





### **How long does the fostering process take?**

The standard process time frame takes between 5-6 months, this allows time for training, assessments and panel to be completed.

Throughout the process you are assigned a fantastic social worker and support.

### **Can I foster in my area?**

There are opportunities to foster a child across the United Kingdom. At enquiry stage, your advisor will ensure the agency is close enough to yourself to be able to foster, some circumstances will result in fostering not being able to proceed due to the area.

### **Will my home be inspected?**

Your home will be inspected by a carer recruitment officer at multiple stages of the process. During the initial home visit, they are looking at the logistics of the home and the spare bedroom.



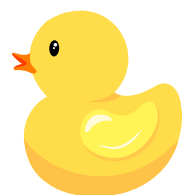
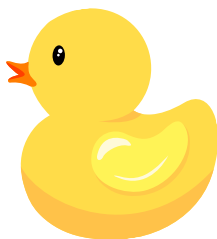
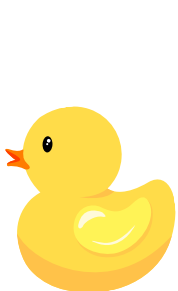
Throughout the assessment stages, the home will be inspected to ensure it meets the standards of the agency and health and safety regulations for fostering.

### **Does a criminal record prevent me from becoming a foster carer?**

Within the enquiry stage, you will need to disclose any criminal records yourself or a partner has committed, each Individual case is varied to the offence and the year of the offence.

All applicants and individuals in the process will undergo an enhanced DBS check (fully paid by the agency).

(Cited information found at the Fostering Network website).





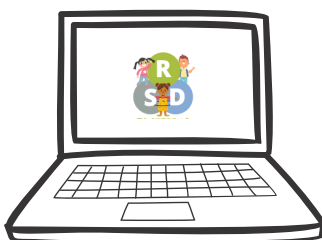
Your guide to fostering with [www.rsdfostering.co.uk](http://www.rsdfostering.co.uk) is a free central resource and information service designed to raise awareness about fostering and answer any questions that may arise during the start of your fostering journey.

Visit our website and register your interest by filling in an online enquiry form. We will contact within 48hrs for a confidential, no obligation chat about fostering.



01752 717666

[info@rsdfostering.co.uk](mailto:info@rsdfostering.co.uk)



**[www.rsdfostering.co.uk](http://www.rsdfostering.co.uk)**

LinkedIn – @rsdfostering

Facebook – @RSDFostering

Twitter – @FosteringRSD

